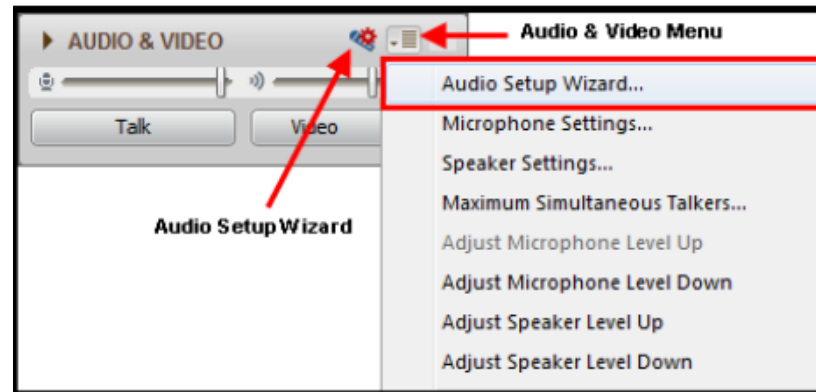


Getting started with Blackboard

- Configure Audio Setup Wizard:



- Or dial in: 1-888-272-8702; code 2053175#



October 8, 2014

Measuring Success: Introducing the New Reporting Framework





Overview

- Welcome & Introduction
- State Program Report (SPR) in Context
- Old SPR vs. New SPR
- Schedule
- Support
- What's Next
- Q & A



Introduction

- The State Program Report (SPR) & the Measuring Success Initiative
- Changes to the system, the data being collected, the manner in which data is recorded, access to data
- Phased changes, led & tested by pilots
- Training and support available; more in development



New SPR: Drivers and Benefits

- Drivers
 - New federal guidelines
 - Better data drives better stories
 - Data transparency
- Benefits
 - Bi-directional data now possible
 - Evidence-based data and stories
 - Facilitate collaboration, knowledge sharing, foster/support communities of practice

New SPR: Impacts and Dates

■ Impacts

- From multiple narratives to brief narratives, fixed choice responses
 - Transition years (different data recording, approaches to projects, financial data embedded within)
 - Leverage system to continue/copy projects year-to-year
- System will capture evaluative data, Match detail

■ Dates

- FY13 reporting
 - Financial Status Report (FSR) due 30 December 2014 via PDF
 - SPR: pilots in new SPR; all others in current SPR, due 30 Dec 2014
- Webinars & training begin January 2015
- FY14 reporting: all report in new system; due 30 Dec 2015
- FY 15: Match detail reporting begins



Guiding Principles

- Developing ways for sharing promising practices in the field.
- Demonstrating value of Grants to States (G2S) funds for public citizens (i.e., how their federal tax dollars are being spent)

Grants to States: *The Visual Experience*



Oklahoma
digital
your electronic library a service



E·voke →

Creating the Future for Library E-Content

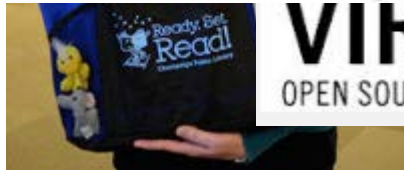


the louis
a partnership with

Library
Text
Alerts



Indiana
Memory
GREEN™
VIRGINIA
OPEN SOURCE LIBRARY SYSTEM



CHOOSE TO
Read
OHIO
Read Together - Read Ohio - Read for Life

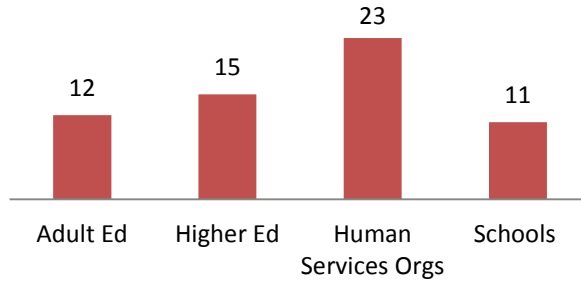
MICHIGAN LIBRARY
meL
org

FY15 Workforce Programs Funded Through LSTA

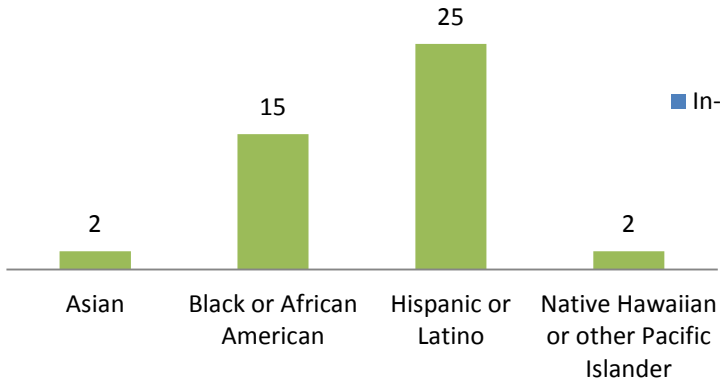
States Offering Workforce Programs



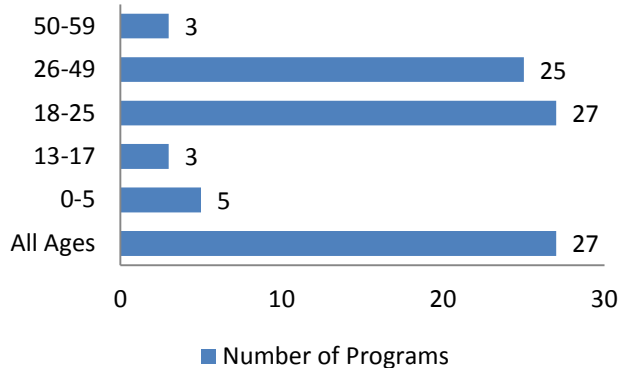
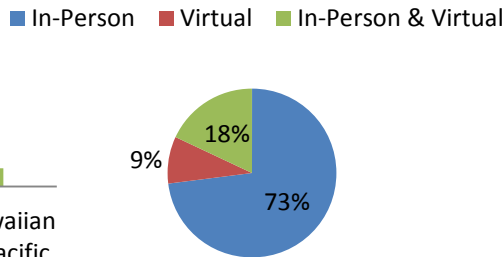
Number of Programs with Partners



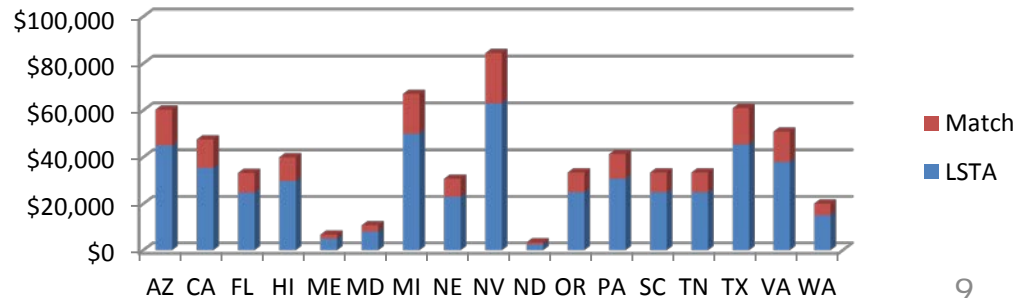
Number of Programs that Target Specific Populations



Program Delivery Type



States	# Programs	# Served	Total Expended
AZ	3	450	\$60,300
CA	4	5786	\$47,570
FL	4	1765	\$33,299
HI	1	256	\$39,959
ME	1	35	\$6,700
MD	3	342	\$10,707
MI	5	2547	\$67,000
NE	2	47	\$30,820
NV	3	350	\$84,420
ND	1	50	\$3,350
OR	2	1257	\$33,500
PA	3	399	\$41,339
SC	1	348	\$33,500
TN	2	352	\$33,500
TX	4	422	\$60,970
VA	3	78	\$50,920
WA	2	400	\$20,100



The Landscape

New Federal Reporting Guidelines

- New Federal Performance Measurement Guidelines:
 - 2 CFR Chapter I, Chapter II, Part 200, et al. See <https://cfo.gov/cofar/reform-of-federal-grants-policies-2/>
 - OMB M-14-06 (“Providing and Using Administrative Data for Statistical Purposes”)
 - OMB M-13-07 (“New Steps in Evidence and Innovation Agenda”)
- Evidence-based decisions for guiding programs.
- Public sharing of performance evidence to promote promising practices across the nation’s states.

SPR in Context

Compliance Monitoring

Performance Reporting

Dissemination

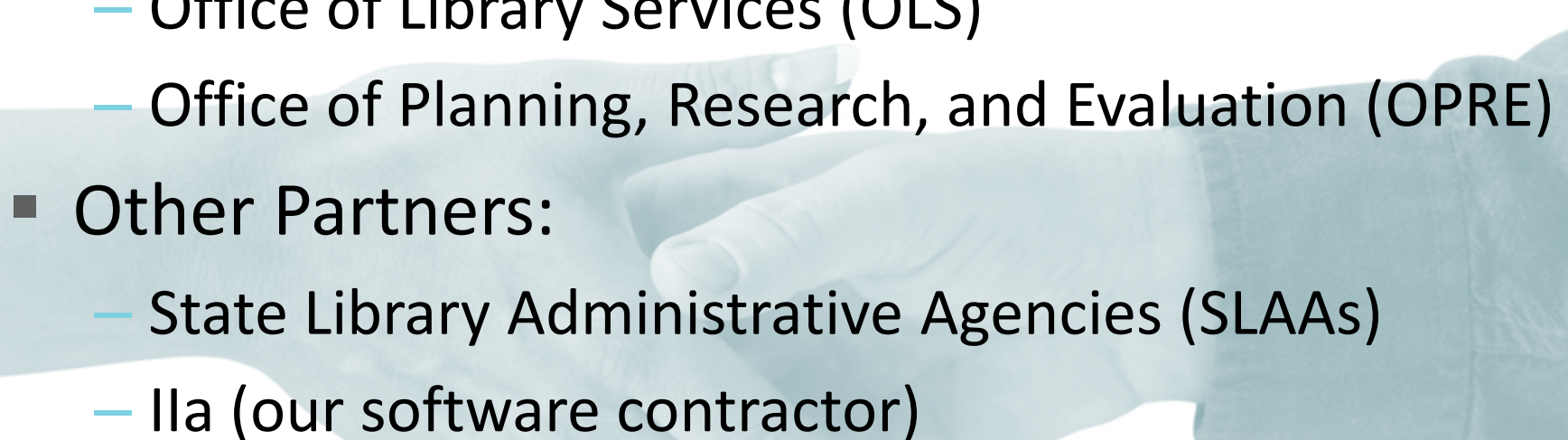


Goals

- Build **more dynamic/easy-to-use tool** to capture better Grants to States data
- **Standardize reporting process** to increase comparability of project reports
- Highlight (and learn from) projects that are **rigorously assessed**
- **Share information** to facilitate SLAA peer learning;
 - build a catalogue of library program information;
 - improve data for policy analysis and in-depth evaluation work



Transformation Takes Cooperation

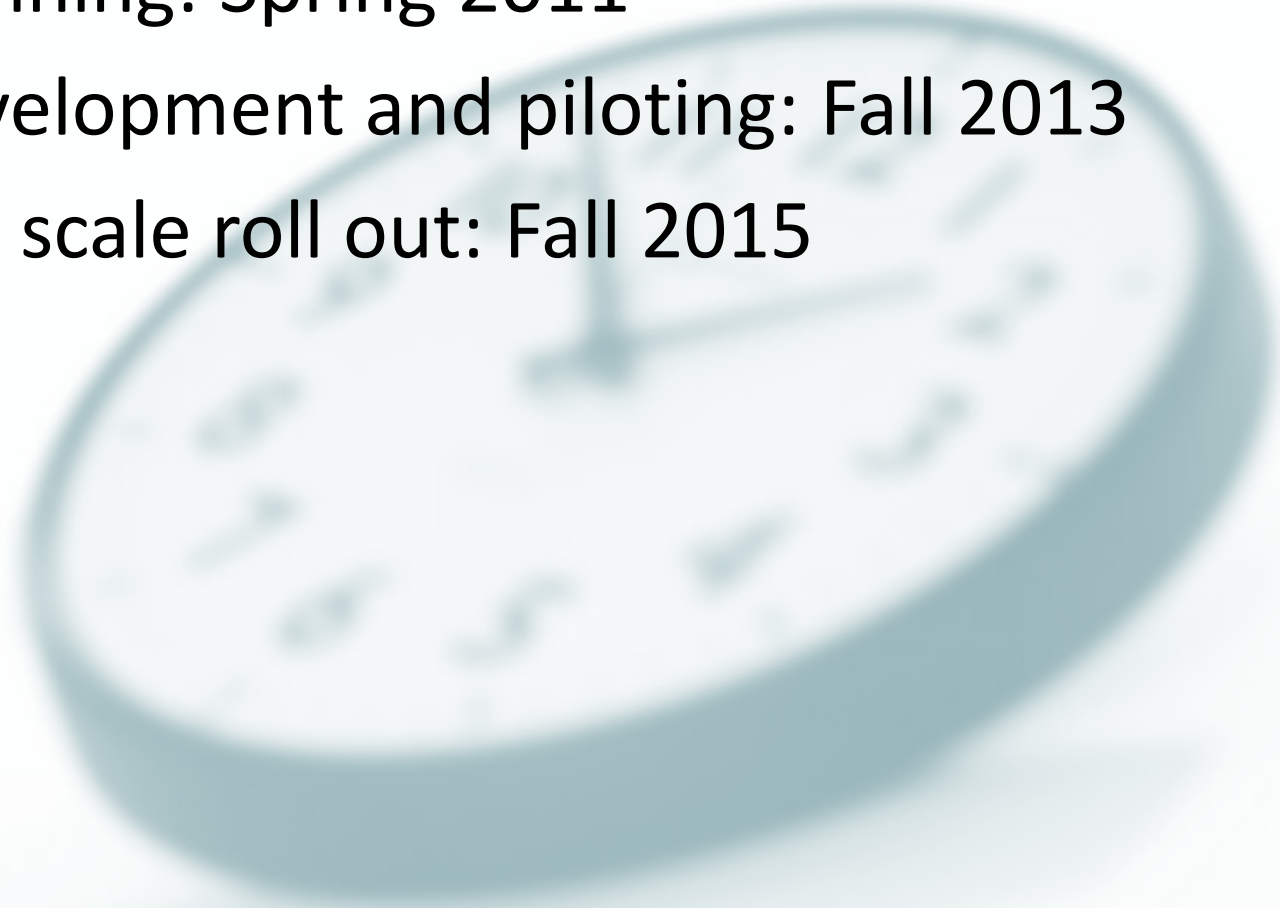
- IMLS Partners:
 - Office of Library Services (OLS)
 - Office of Planning, Research, and Evaluation (OPRE)
 - Other Partners:
 - State Library Administrative Agencies (SLAAs)
 - Ila (our software contractor)
- 

Pilot States

- 
- A map of the United States with 15 states highlighted in light green. These states are: Alaska, Arizona, Arkansas, Colorado, Florida, Idaho, Illinois, Massachusetts, Michigan, New York, North Carolina, Ohio, Oklahoma, Virginia, and Washington. The rest of the states are shown in white with black outlines.
- Alaska
 - Arizona
 - Arkansas
 - Colorado
 - Florida
 - Idaho
 - Illinois
 - Massachusetts
 - Michigan
 - New York
 - North Carolina
 - Ohio
 - Oklahoma
 - Virginia
 - Washington
 - Vermont

Transformation Takes Time

- Planning: Spring 2011
- Development and piloting: Fall 2013
- Full scale roll out: Fall 2015





Phased Transition

- Descriptive Reporting
- Outcomes Reporting

Redesign of SPR

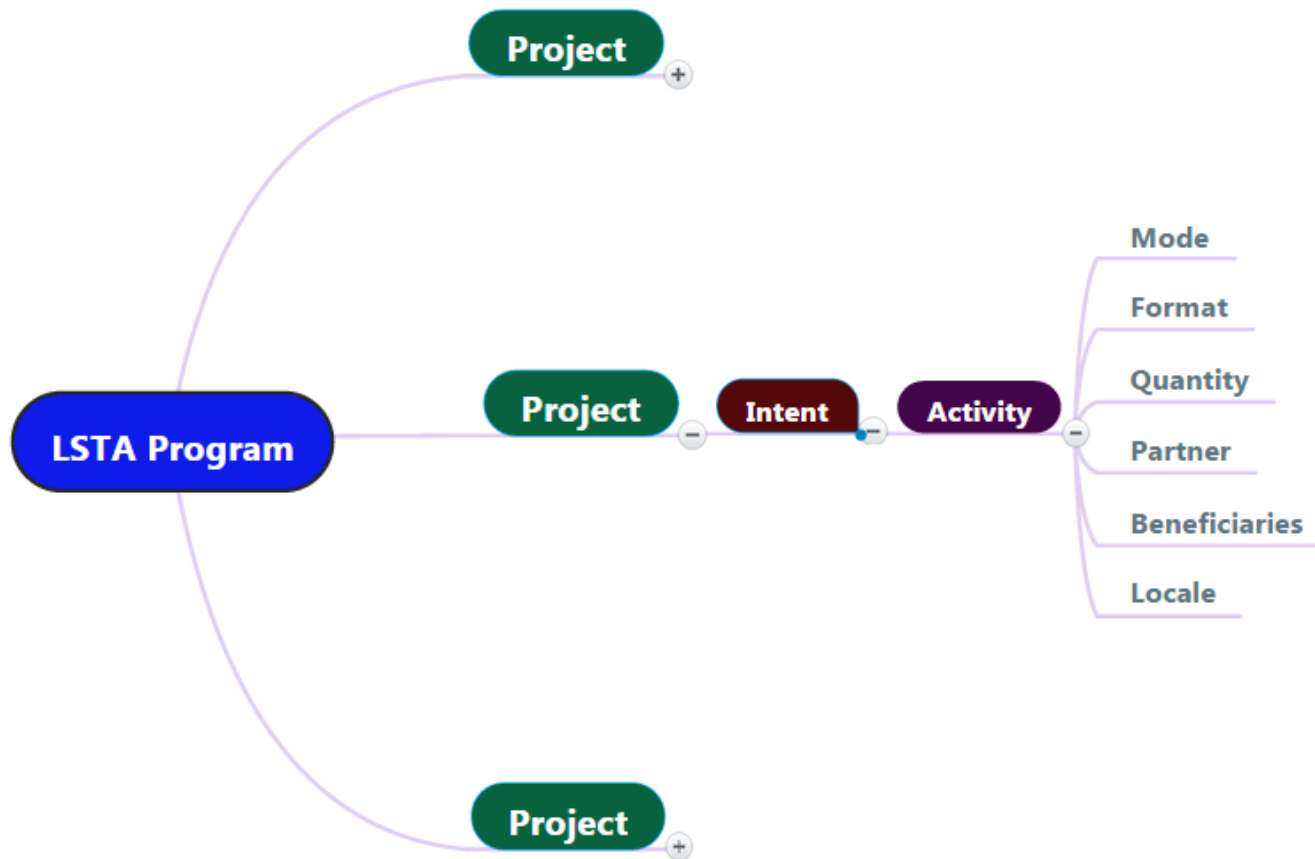
Old SPR

- Open-ended narrative fields.
- Inadequate comparability across project fields.
- One-way reporting process centered around compliance.

New SPR

- Structured, survey-like closed-ended fields.
- Comparability across projects for assessing performance.
- Two-way reporting process centered around dissemination.

Projects



Descriptive Reporting



Descriptive Reporting, Cont'd



Descriptive Reporting, Cont'd





Old vs. *New*

Redesign of SPR: Narratives

Old SPR	New SPR
Project Purpose (Narrative)	Project Abstract (Brief Narrative)
Activities / Methods (Narrative)	Activity Abstract (Brief Narrative) Activity Fixed Choice: Type > Mode > Format
Outputs (Narrative)	Quantities (Numeric)
Outcomes (Narrative) Other Results (Narrative) Anecdotal Information (Narrative)	Outcomes & Future Project* (Brief Narrative & Fixed Choice)
Exemplary Project (Check box & Narrative)	Exemplary Project (Check box & Brief Narrative)

Redesign of SPR

Old SPR	New SPR
LSTA Purpose Primary / Secondary Performance Category Primary / Secondary Services	Intent Subject(s)

Redesign of SPR

Intent (based on Focal Areas), e.g.:

Focal Area	Intent
<i>Lifelong Learning</i> <i>Improve users' knowledge or abilities beyond basic access to information</i>	Improve users' formal education
	Improve users' general knowledge and skills
<i>Employment & Economic Development</i> <i>Improve users' ability to apply information that furthers the status of their jobs and/or business</i>	Improve users' ability to use resources and apply information for employment support
	Improve users' ability to use and apply business resources

Redesign of SPR: Budgets

Old SPR	New SPR		
LSTA funds expended	▪ <u>Salaries/Wages/Benefits</u>	LSTA \$	Match \$
Cash Match	▪ <u>Consulting Fees</u>		
In-kind Contributions	▪ <u>Travel</u>		
Total Cost	▪ <u>Supplies/Materials</u>		
	▪ <u>Equipment</u>		
	▪ <u>Services</u>		

Redesign of SPR: Financials

Old SPR	New SPR
FSR Separate	FSR Integrated Note: Interim FSR will be required For Example in FY 2014, Annual Report will include: <ul style="list-style-type: none">– Final FY 2014 FSR– Interim FY 2015 FSR
Match not linked to Projects	Match reporting will be integrated with Projects (FY 2015+)



Redesign of SPR: Activities

Activity Types

- Instruction
- Content
- Planning/Evaluation
- Procurement



Redesign of SPR: Activities

Activity Modes

- Instruction
 - Program
 - Presentation
 - Consultation/Referral



Redesign of SPR: Activities

Activity Formats

- Instruction
 - Program
 - In-person
 - Virtual
 - In-person/Virtual

Redesign of SPR

Old SPR	New SPR
Library Building	Locale
Primary / Secondary User	Beneficiary (Fixed Choice by Type)
Partnership (check box)	Partner (Fixed Choice by Type)

Redesign of SPR

Old SPR	New SPR
LSTA Administration Project	LSTA Administration Project <ul data-bbox="1052 721 1449 849" style="list-style-type: none">• Separate entry• Budget detail



Redesign of SPR

New Features

- “Information Update” integrated
- Upload additional materials / URLs
- Project Tagging
- Add / Edit State Goals



Schedule

FY 2013 Allotment

- States (not Pilots):
 - Old SPR
 - Due December 30, 2014
- Pilot States: New SPR



Schedule

FY 2014 Allotment

- States (not Pilots): New SPR (opens early 2015)
 - Descriptive Reporting
 - Due December 30, 2015
- Pilot States: New SPR
 - Descriptive Reporting
 - + additional outcomes



Schedule

FY 2015 Allotment

- States (not Pilots): New SPR
 - Descriptive Reporting + Match
 - Due December 30, 2016
- Pilot States: New SPR
 - Descriptive Reporting
 - + additional outcomes



Schedule

FY 2016 Allotment

- All States: New SPR
 - Descriptive Reporting + Match
 - + additional outcomes
 - Due December 30, 2017

Schedule

Reporting / Allotment	FY 2013	FY 2014	FY 2015	FY 2016
Old SPR	States <i>(not Pilots)</i>			
New SPR: Descriptive Reporting	Pilot States	All States	All States + Match	All States + Match
New SPR: Additional Outcomes		Pilot States	Pilot States	All States



Support

Documentation

<http://stateprograms.imls.gov/NewProgramReport.htm>

- Schedule
- Key Terminology
- Project Examples
- Reporting Template (coming this week)
- Report Manual (coming this winter)



Support

Webinars

- January 2015: Defining Projects
- February 2015: Subgrants
- March 2015: State Efforts
- Additional Sessions TBD



Support


- In-person Training (Tentative ~April)
- Pilot States
- Community Building

Reminders

- FY 2013 Reports due Dec. 30, 2014 (Old SPR)
- FY 2014 Reports due Dec. 30, 2015 (New SPR)
- Webinars begin January 2015
- Documents and tools available on the Extranet:
<http://stateprograms.imls.gov/NewProgramReport.htm>
(username: lsta / password: statepgms55)

What's Next?

There should be two parts to our LSTA story...



A good description
of how things
get done.
(the what and the how)

Clear and compelling
statements about
the difference
these projects
have made.

Putting the Pieces Together:

Building a Guide for Best Practices in Library Services

The Yin: Gathering Detailed Information about Practice

Consistent project information gathered over time, across settings:

- Makes it easier to document how things happen. How are they similar? How are they different?
- Improves access to info and replicability/sharing
- Helps us compare similar practices in different settings

The Yang: Gathering Evidence about Program Efficacy

- Helps us distinguish between projects that may have had a larger or lesser impact (for a variety of reasons).
- Helps with resource allocation decisions.
- Can be used to distinguish between two similar programs.

Old
SPR

New
SPR

Phasing in Outcome Reporting

Winter 2014/2015 – Summer 2015

- IMLS provides support/training to pilots for outcome reporting; Pilots do reality check on outcome protocols

Summer 2015 - Winter 2015/2016

- Pilot states begin reporting on outcome protocols; help develop guidance documentation for entire LSTA community

Summer 2016 - Winter 2016/2017

- IMLS staff provide ongoing TA/evaluation support to all SLAAs for outcome reporting; pilot states play role as peer mentors for outcome assessment

Where does G2S go from here?

What we are building has many uses :

- **Individual project profiles** can synthesize projects for different audiences
- **Dashboards** can provide an overview within and across states
- **Combining data** from over 1000+ federally funded library projects with other community based data





Questions?



Contact Us

- Robin Dale, Associate Deputy Director
 - rdale@imls.gov; 202-653-4650
- Michele Farrell, Senior Program Officer
 - mfarrell@imls.gov; 202-653-4656
- James Lonergan, Senior Program Officer
 - jlonergan@imls.gov; 202-653-4653
- Timothy Owens, Senior Program Officer
 - towens@imls.gov; 202-653-4776